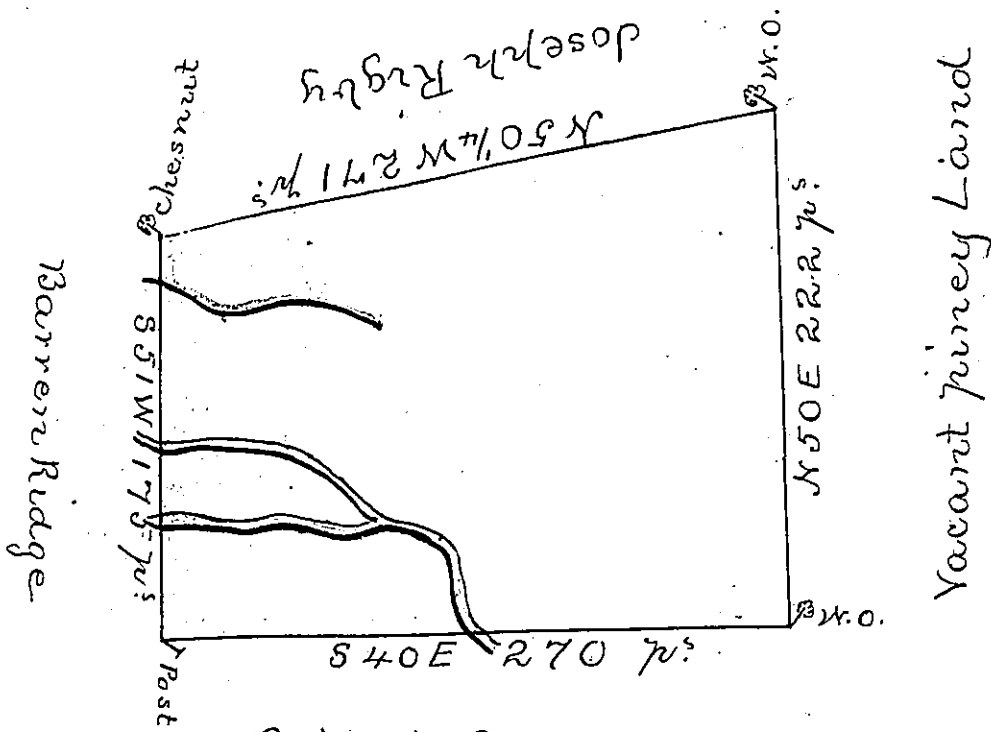


1-433



Robert Owens
R-34

In pursuance of an Order N^o 416 dated the first day of August 1766 surveyed the first day of November following for John Straw the above described tract of Land situated on a large Run in the County of Cumberland containing Three ~~Acres~~ (obliterated) and the usual allowance of (obliterated)

Richard Lea Dep^y Survey^r

To John Lukens Esq^r: Survey^r: Gen^l.
now Huntingdon County.

IN TESTIMONY that the above is a copy of the original remaining on file in the Department of Internal Affairs of Pennsylvania, made conformably to an Act of Assembly approved the 16th day of February, 1833, I have hereunto set my Hand and caused the Seal of said Department to be affixed at Harrisburg, this

third day of January 1884.

J. Simpson Africa,
Secretary of Internal Affairs.